



LM(N)56X3-11

0.56" THREE DIGIT DISPLAY (MULTIPLEX DRIVE)

Features

- * LOW CURRENT REQUIREMENTS
- * EXCELLENT CHARACTER APPEARANCE
- * HIGH LIGHT OUTPUT
- * RELIABLE AND RUGGED
- * IC COMPATIBLE

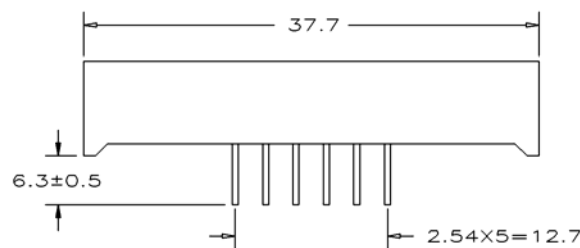
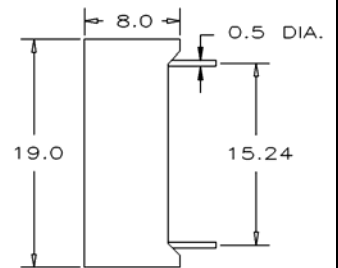
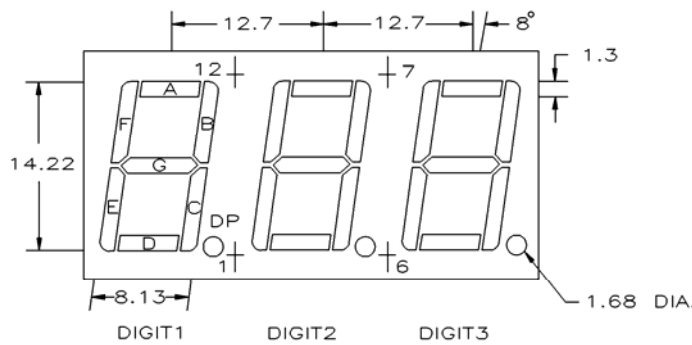
Absolute Maximum Ratings at $T_A=25^\circ\text{C}$

REVERSE VOLTAGE PER LED CHIP (<math><100 \mu\text{A}</math>)	GaAsP RED 3.0V, OTHER 5.0V
D.C. FORWARD CURRENT PER LED CHIP.....	30 mA
PULSE CURRENT (1/10 DUTY CYCLE, 0.1 ms PULSE WIDTH) PER LED CHIP.....	100 mA
OPERATING TEMPERATURE RANGE.....	-25°C TO +85°C
STORAGE TEMPERATURE RANGE.....	-25°C TO +100°C
LEAD SOLDERING TEMP. (1.6mm FROM SEATING PLANE).....	260°C FOR 3 SEC.

Electrical/optical characteristics at $T_A=25^\circ\text{C}$

PART NUMBER	LED CHIP	FACE COLOR	PEAK WAVELENGTH @20mA(nm)	FORWARD VOLTAGE @20mA(V)		LUMINOUS INTENSITY @10mA(mcd)				
				TYP.	MAX.	MIN.	TYP.			
LN5613-11EWRN	LM5613-11EWRN	GaAsP	RED	GREY	WHITE	655	1.7	2.0	0.3	0.5
LN5653-11EWRN	LM5653-11EWRN	GaP	RED	GREY	WHITE	700	2.1	3.0	0.5	0.8
LN5623-11EWRN	LM5623-11EWRN	GaP	GREEN	GREY	WHITE	567	2.1	3.0	1.7	2.9
LN5633-11EWRN	LM5633-11EWRN	GaAsP ON GaP	YELLOW	GREY	WHITE	585	2.1	3.0	1.4	2.3
LN5643-11EWRN	LM5643-11EWRN	GaAsP ON GaP	ORANGE	GREY	WHITE	635	2.1	3.0	2.0	3.3
LN5643R-11RRRN	LM5643R-11RRRN	GaAsP ON GaP	ORANGE	RED	RED	635	2.1	3.0	2.0	3.3

Package Dimensions And Pin Function



- LN56X3-11
COMMON ANODE
- PIN NO. FUNCTION
- 1.CATHODE E
 - 2.CATHODE D
 - 3.CATHODE DP
 - 4.CATHODE C
 - 5.CATHODE G
 - 6.NO CONNECTION
 - 7.CATHODE B
 - 8.DIGIT 3 COMMON ANODE
 - 9.DIGIT 2 COMMON ANODE
 - 10.CATHODE F
 - 11.CATHODE A
 - 12.DIGIT 1 COMMON ANODE

- LM56X3-11
COMMON CATHODE
- PIN NO. FUNCTION
- 1.ANODE E
 - 2.ANODE D
 - 3.ANODE DP
 - 4.ANODE C
 - 5.ANODE G
 - 6.NO CONNECTION
 - 7.ANODE B
 - 8.DIGIT 3 COMMON CATHODE
 - 9.DIGIT 2 COMMON CATHODE
 - 10.ANODE F
 - 11.ANODE A
 - 12.DIGIT 1 COMMON CATHODE

1.ALL DIMENSIONS ARE IN mm, TOLERANCE IS ±0.25mm UNLESS OTHERWISE NOTED.
2.THE SLOPE ANGLE OF ANY PIN MAY BE ±5.0°MAX.