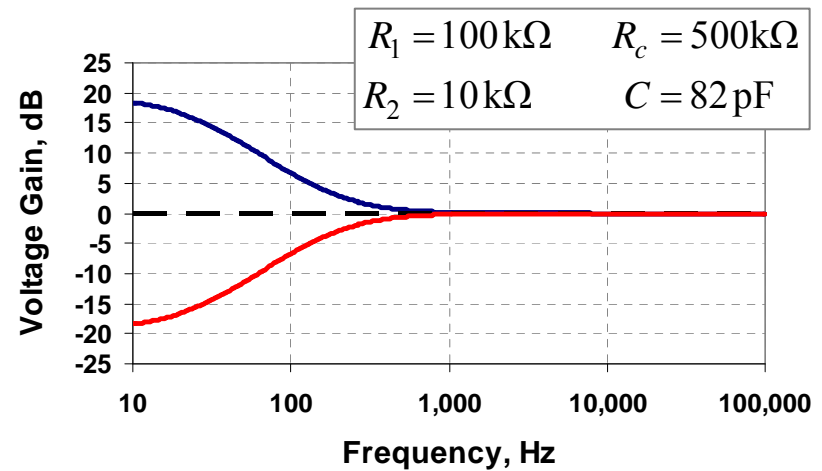
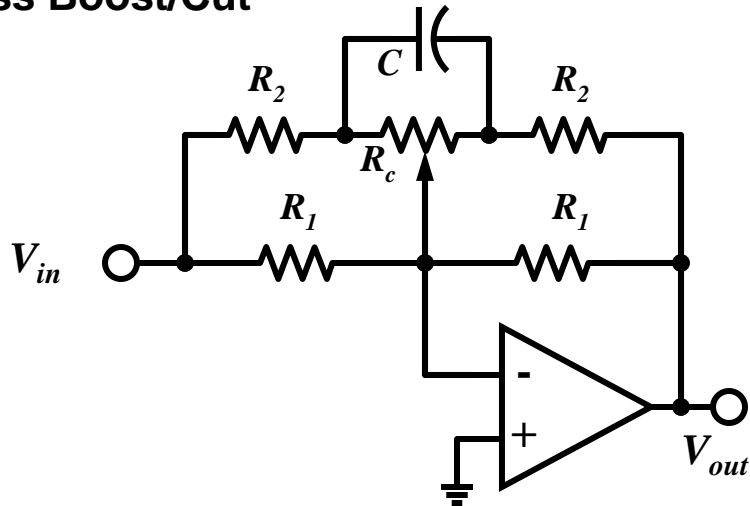
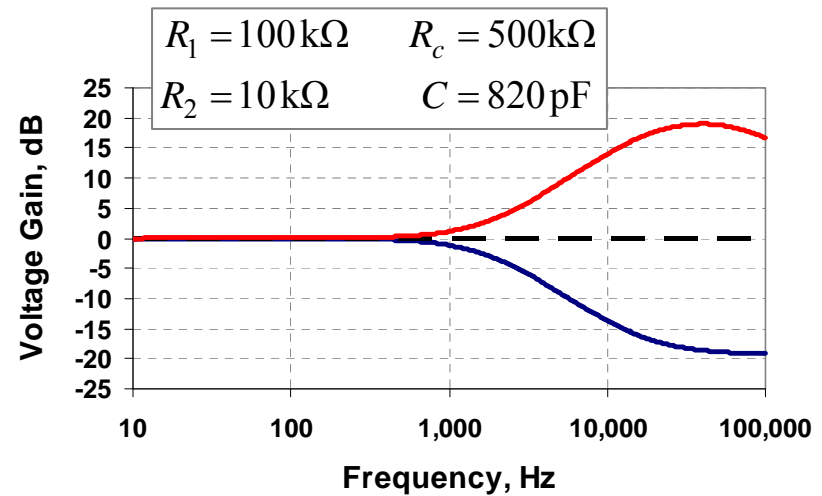
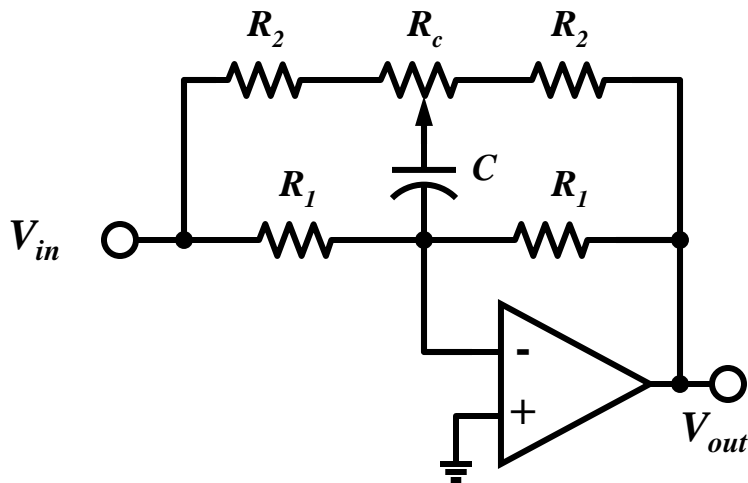


Audio Tone-Control Circuits

Bass Boost/Cut



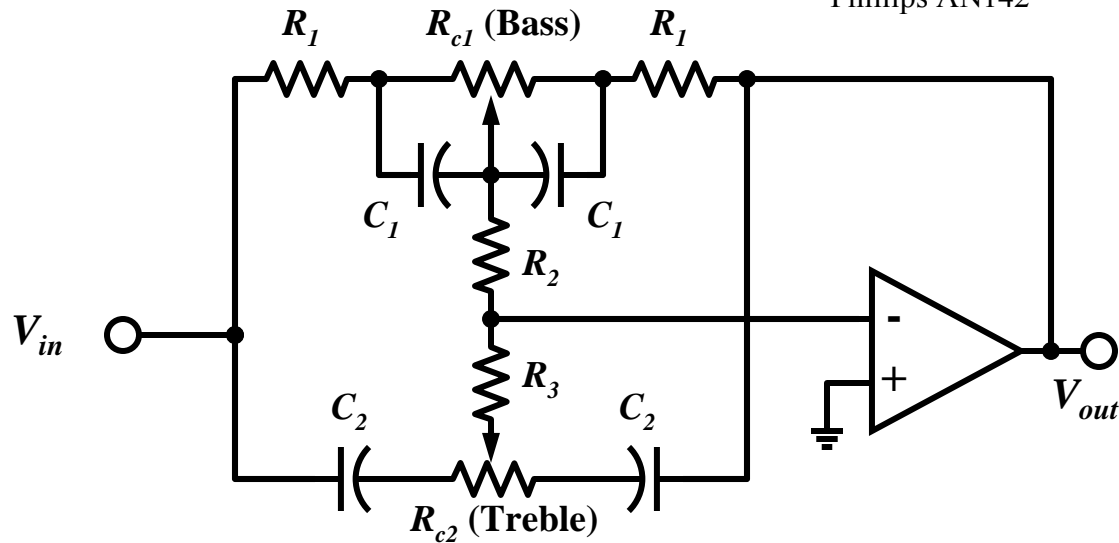
Treble Boost/Cut



More Audio Tone-Control Circuits

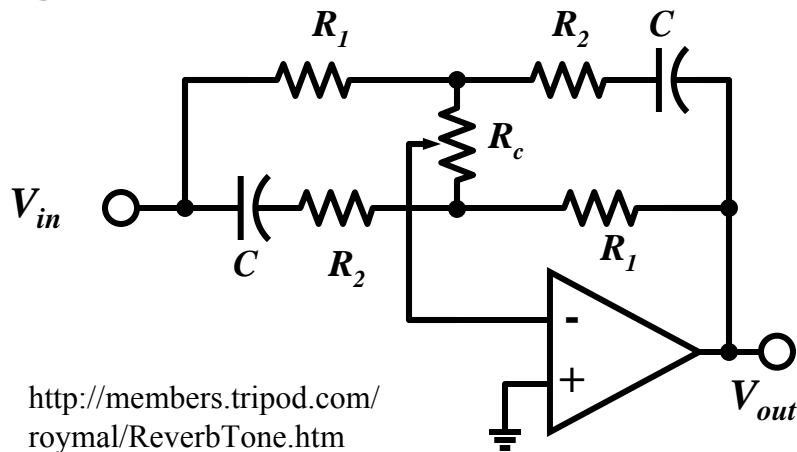
Independent Bass/Treble Control

Phillips AN142



- $R_1 = 10\text{ k}\Omega$
- $R_2 = 10\text{ k}\Omega$
- $R_3 = 3.3\text{ k}\Omega$
- $C_1 = 33\text{ nF}$
- $R_{c1} = 100\text{ k}\Omega$
- $C_2 = 33\text{ nF}$
- $R_{c2} = 100\text{ k}\Omega$

Single-Knob Tone Control



<http://members.tripod.com/roymal/ReverbTone.htm>

- $R_1 = 10\text{ k}\Omega$
- $R_2 = 2.2\text{ k}\Omega$
- $R_c = 20\text{ k}\Omega$
- $C = 22\text{ nF}$

