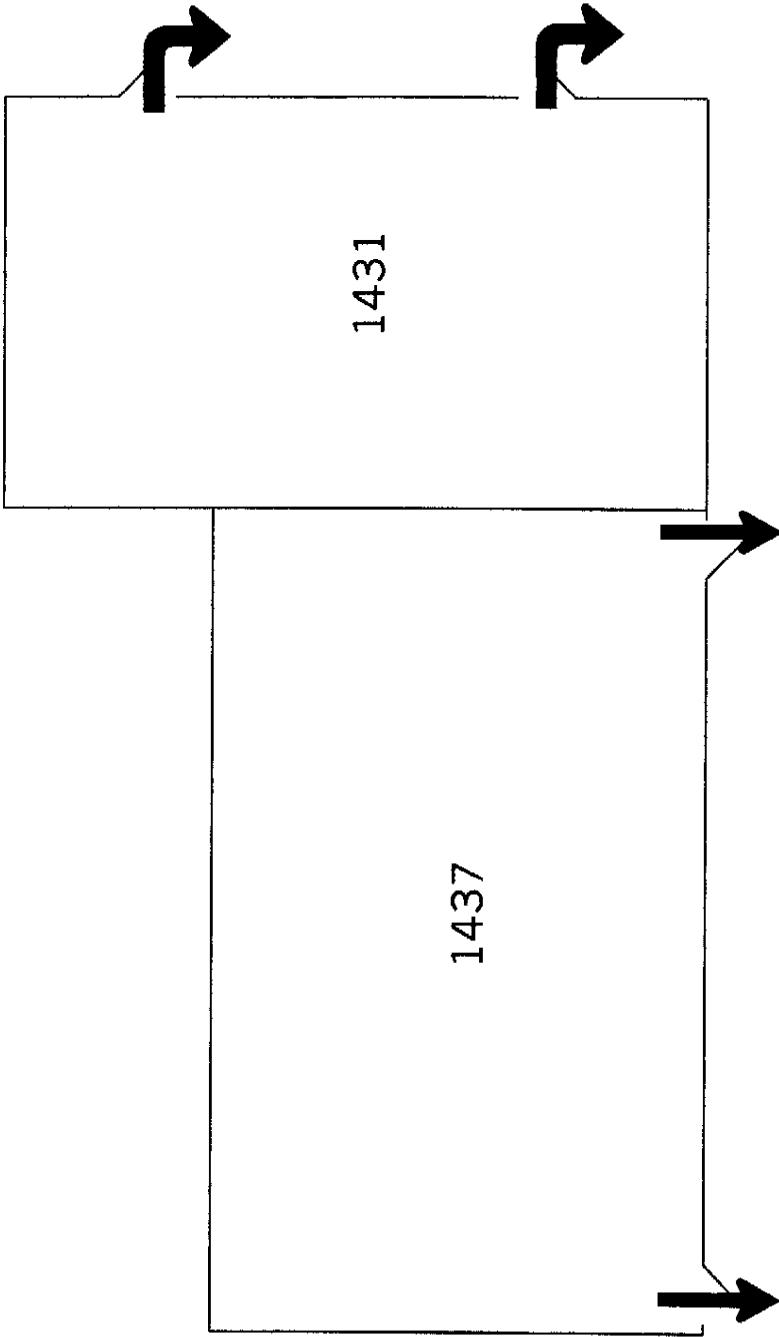
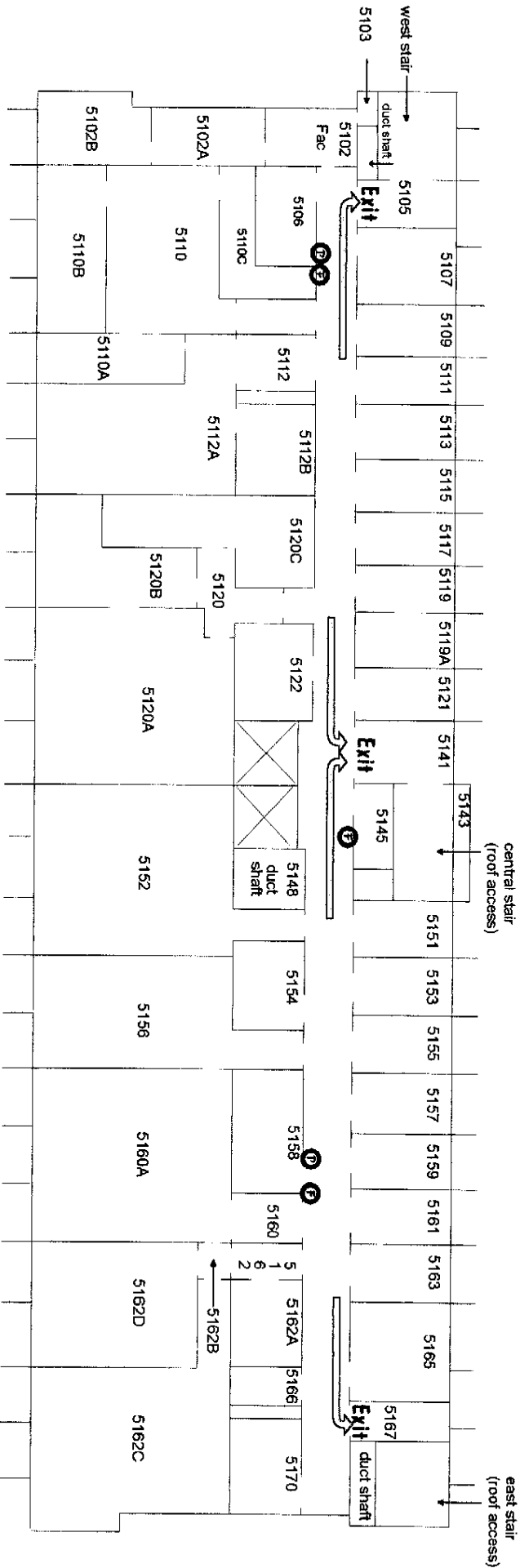


Evacuation Routes and Emergency Assembly Points		
UCSB College of Engineering		
Rev. Date:	Rev. By:	
11/20/06	P. Gritt	



Emergency Evacuation Routes	
Bldg. 560, Phelps Hall, Rms 1431, 1437	
NOT TO SCALE	
REV. DATE	REV. BY
990506	dragon





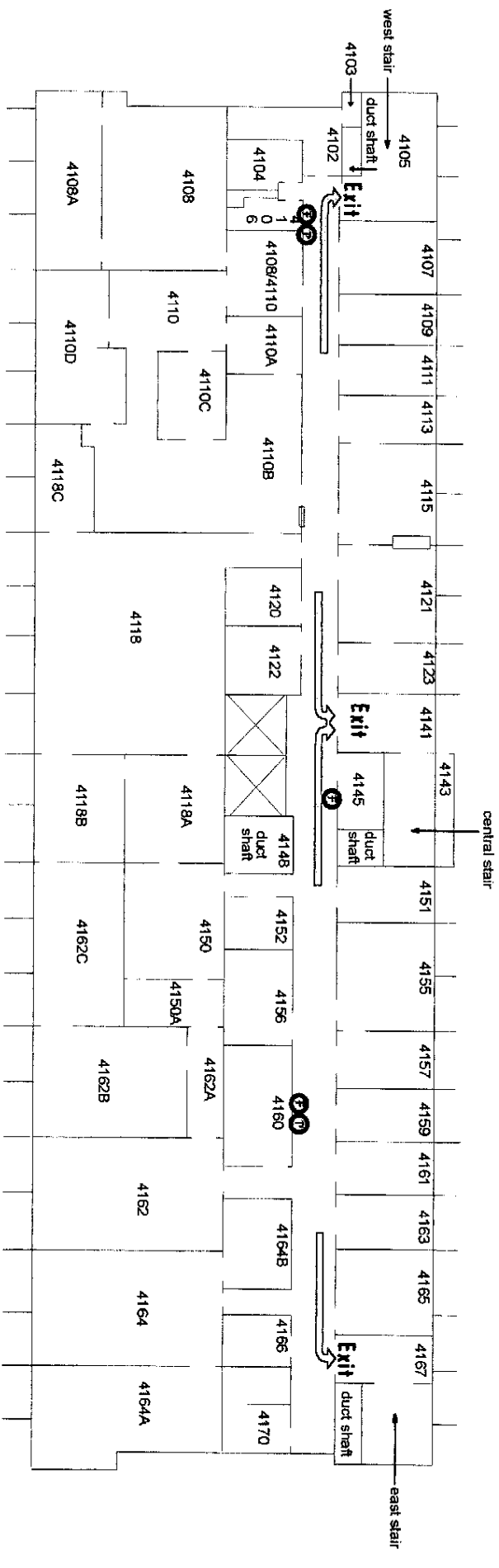
Fire Alarm Pull Station



Fire Extinguisher or Hose Location

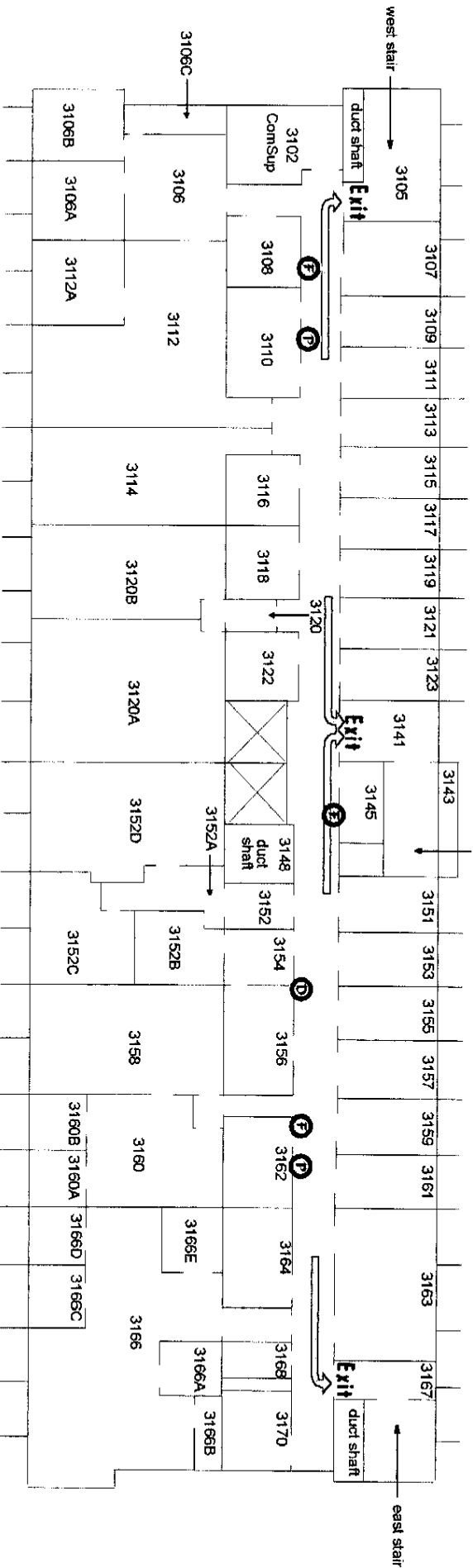
EmergOps FLOOR PLAN	
Engineering Bldg. 1 (Bldg. 556)	
Fifth Floor	
REV. DATE	REV. BY
990511	dragon

-  Fire Alarm Pull Station
-  Fire Extinguisher or Hose Location





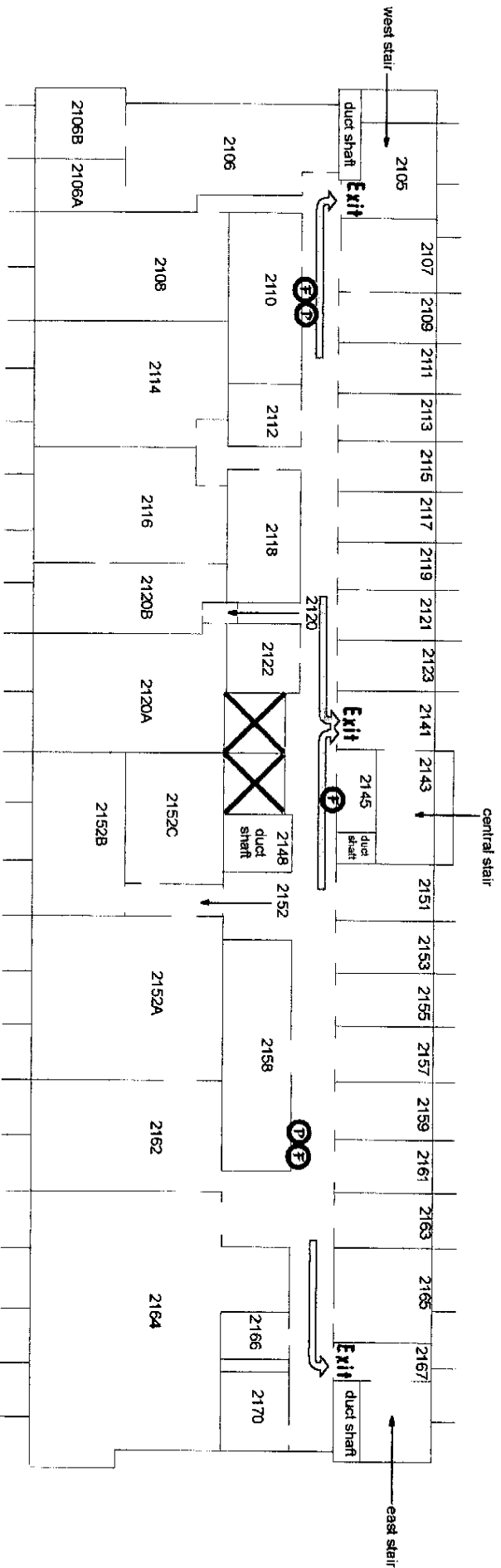
EmergOps FLOOR PLAN	
Engineering Bldg 1 (Bldg 556)	
Fourth Floor	
REV DATE	REV BY
990611	dragon

- P** = Fire Alarm Pull Station
- F** = Fire Extinguisher or Hose Location
- D** = Fire Alarm Display Panel



EmergOps FLOOR PLAN	
Engineering Bldg. 1 (Bldg. 556)	
Third Floor	
REV DATE	REV BY
990511	dragon

-  Fire Alarm Pull Station
-  Fire Extinguisher or Hose Location



EmergoPs FLOOR PLAN	
Engineering Bldg. 1 (Bldg. 556)	
Second Floor	
REV. DATE	REV. BY
990511	dragon



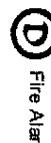
Contact point for Emergency Responders



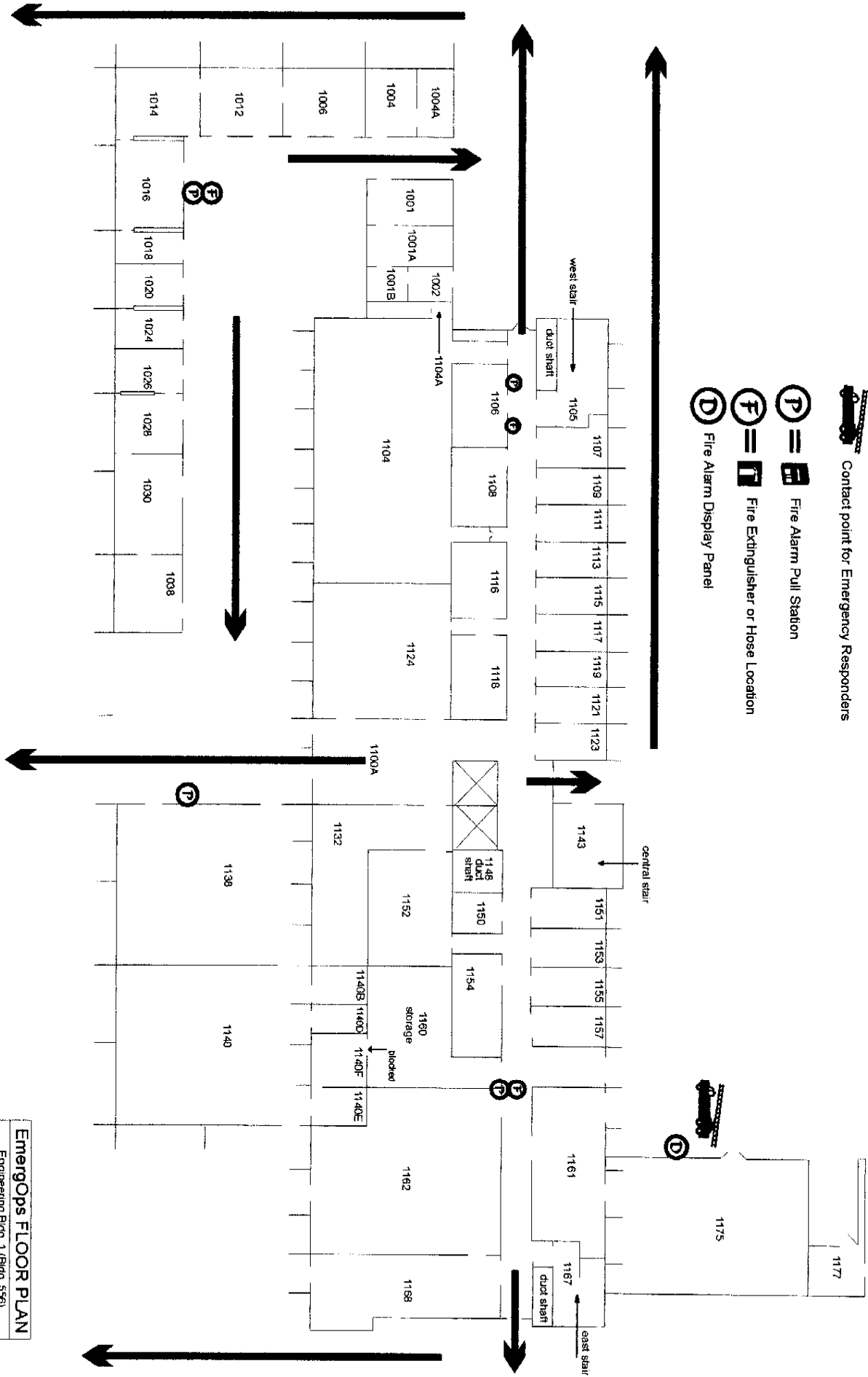
Fire Alarm Pull Station



Fire Extinguisher or Hose Location

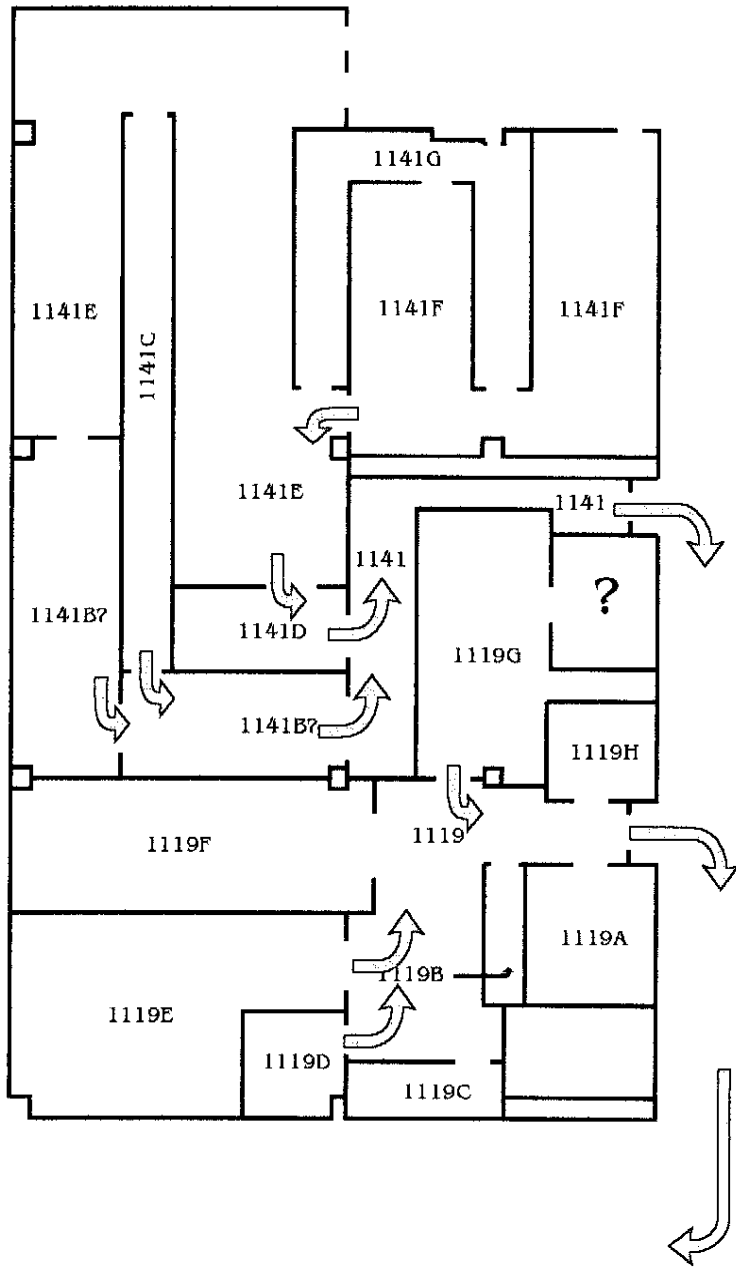


Fire Alarm Display Panel

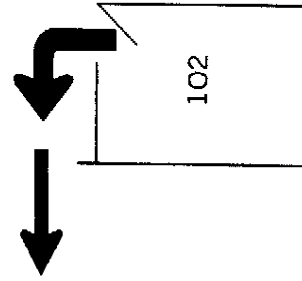
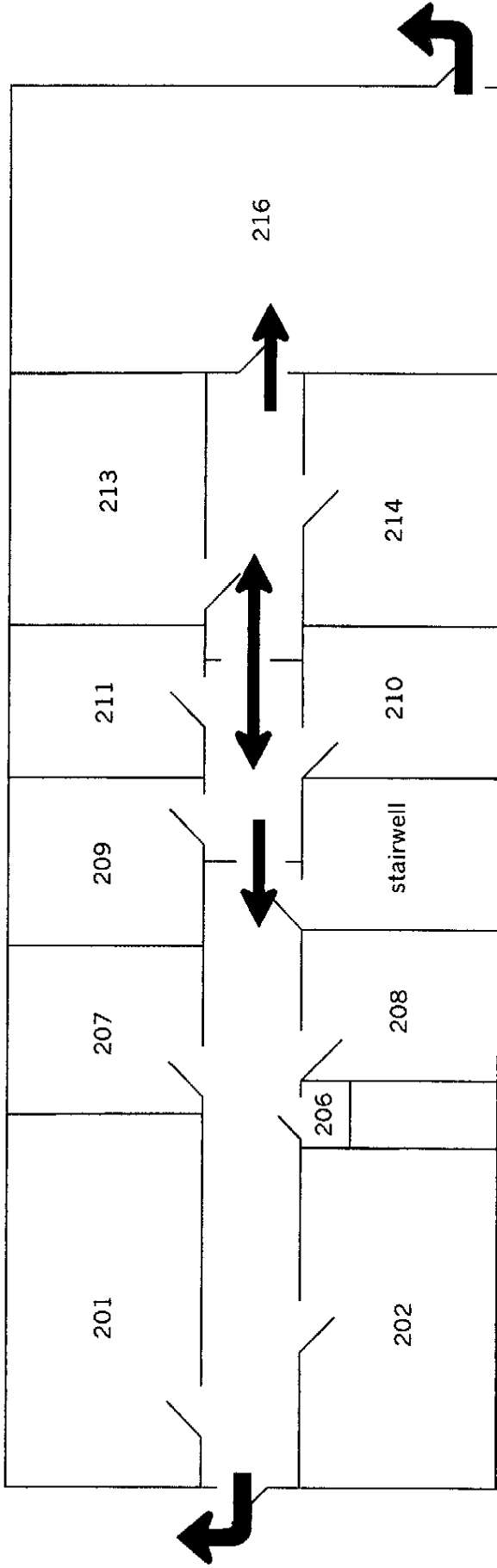


EmergOps FLOOR PLAN

Engineering Bldg 1 (Bldg 556)	
Ground (first) Floor	
REV DATE	REV BY
9/30/07	diagm

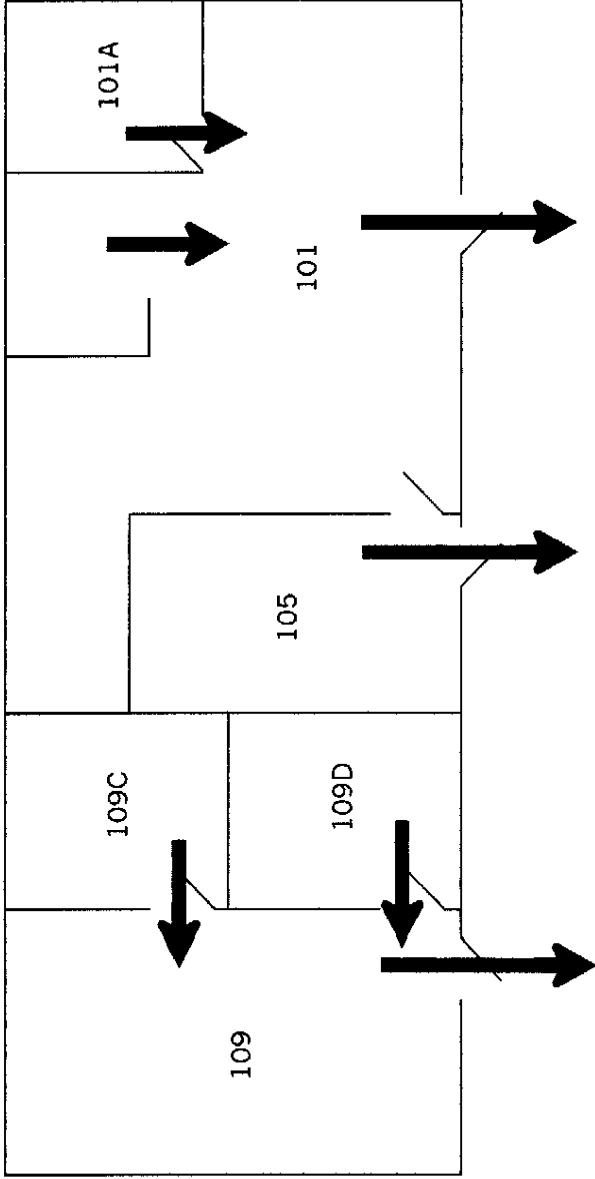


EmergOps FLOOR PLAN	
Engineering Bldg. 2 (Bldg. 503)	
Ground (first) Floor–West Wing	
REV. DATE	REV. BY
990519	dragon

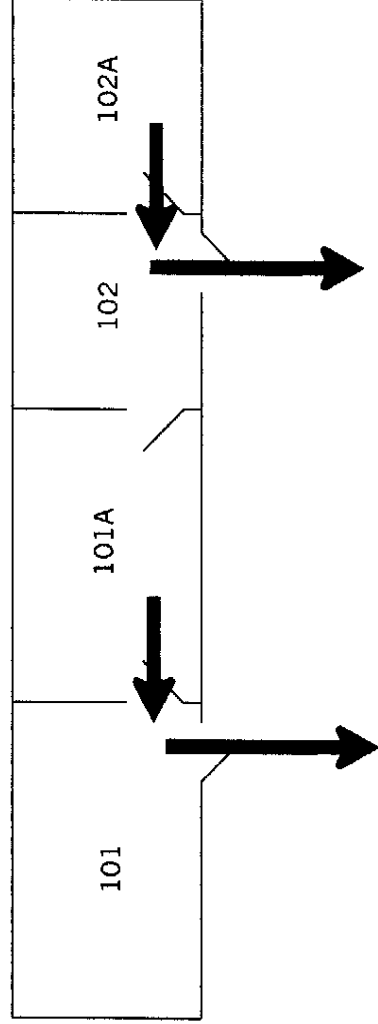


Emergency Evacuation Routes	
Bldg. 406	
NOT TO SCALE	
REV. DATE	REV. BY
990506	dragon

Trailer 380



Trailer 384



EmergOps FLOOR PLAN	
Trailers 380 and 384	
Evacuation Routes	
REV. DATE	REV. BY
9/05/06	dragon