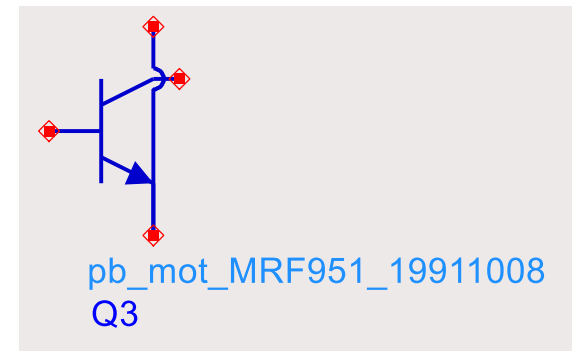


ADS models

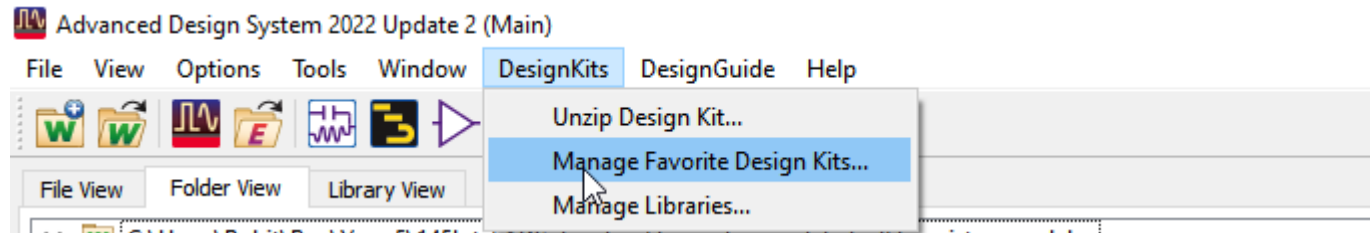
Rohit Reddy Karnaty

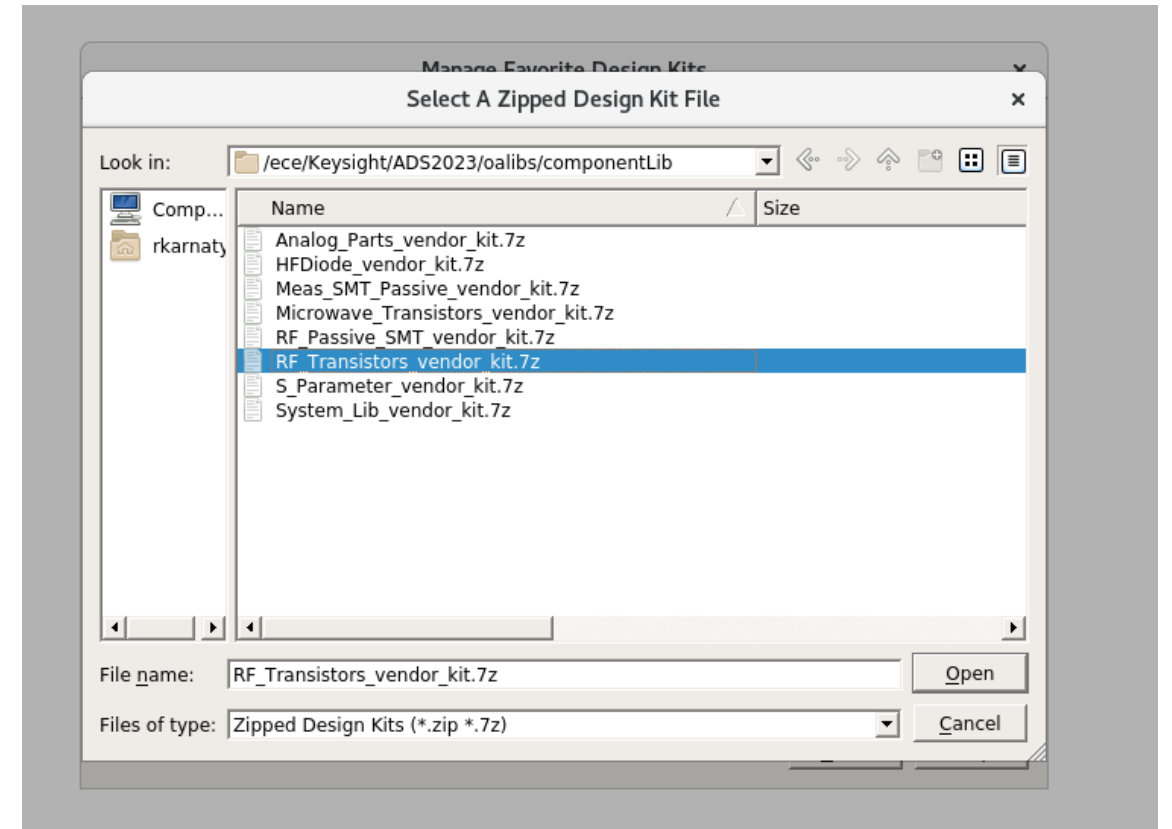
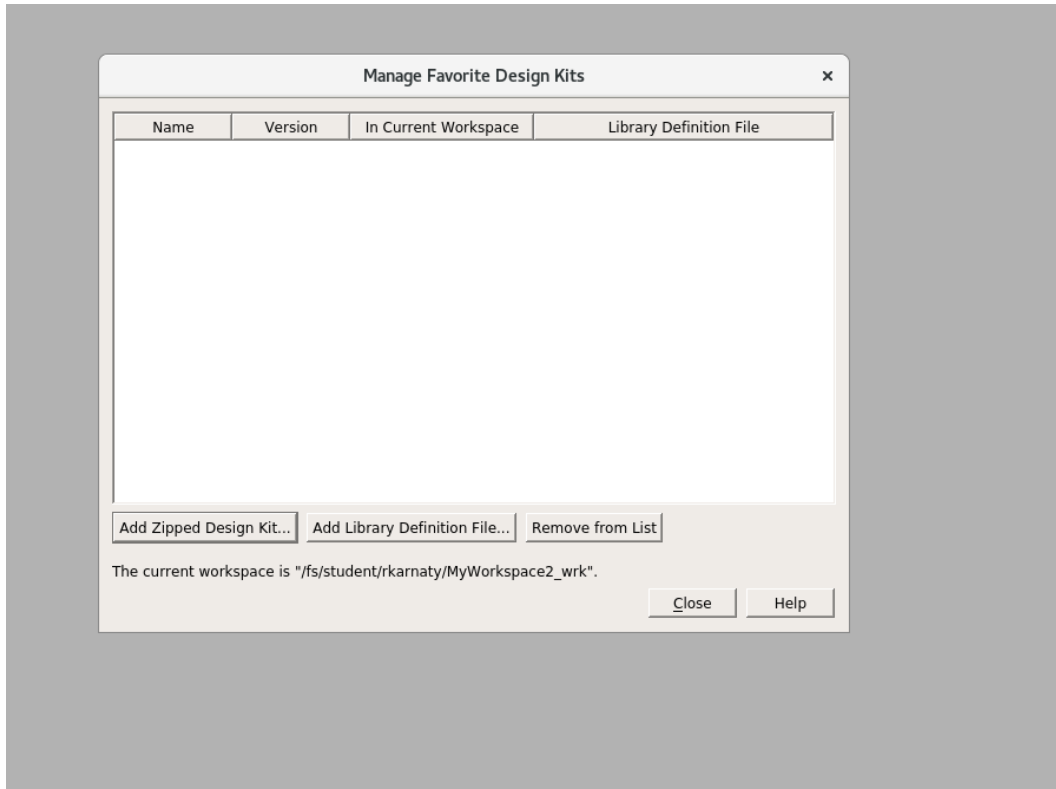
ECE 145B/218B

Installation instructions



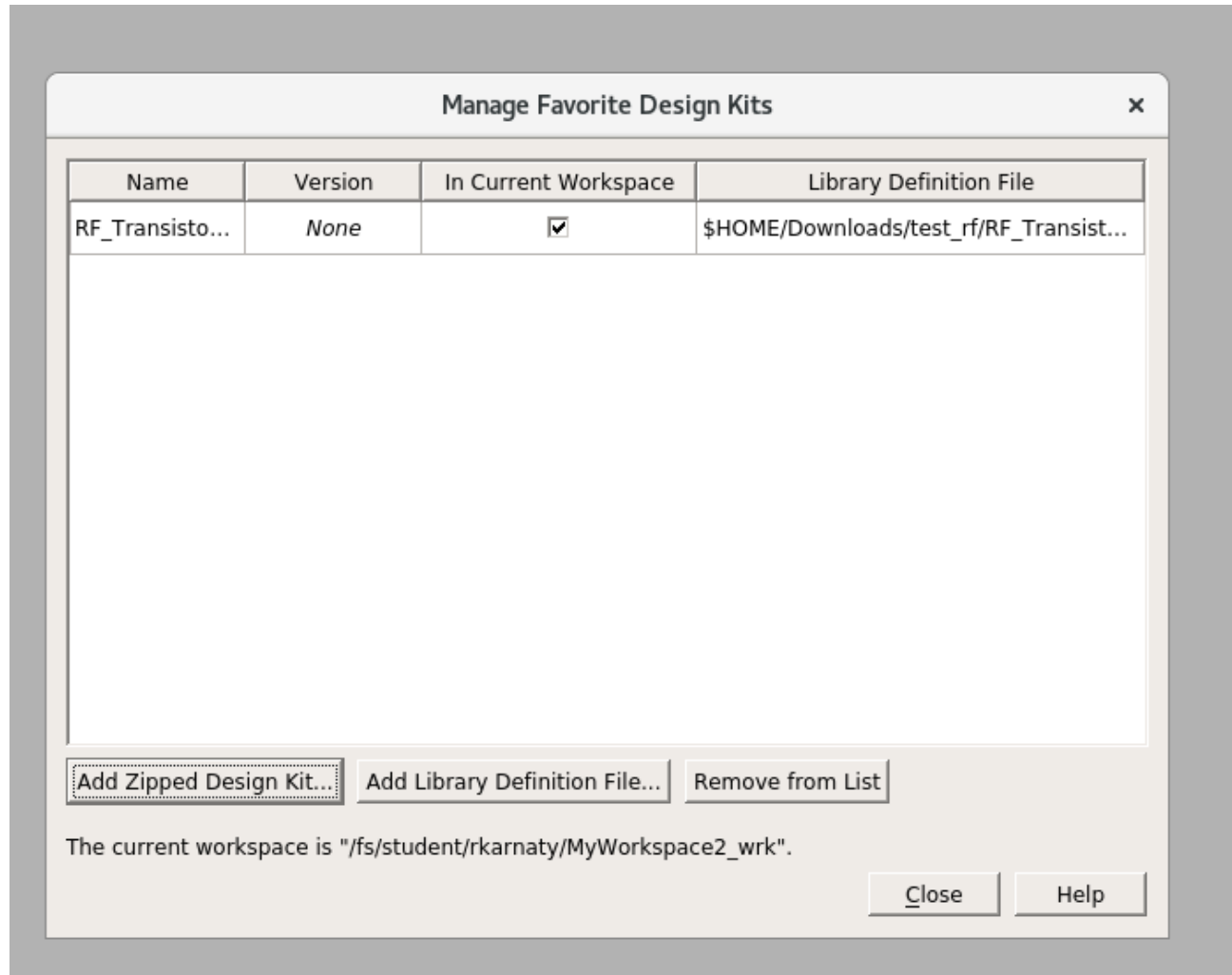
- The required model is a part of the RF transistors library. To import this component we have to install the library
- Open the Manage Favorite Design Kits





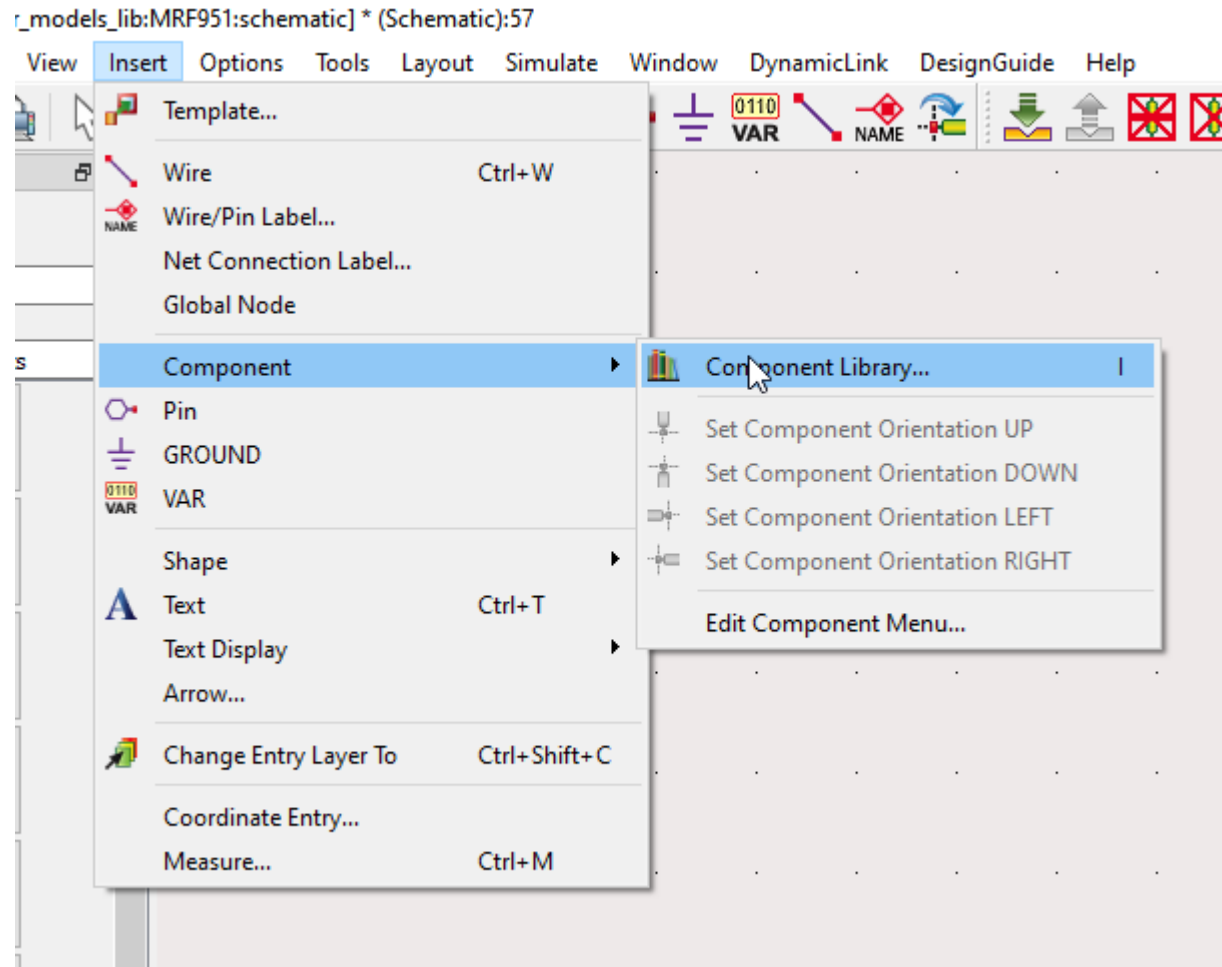
- Select “Add Zipped Design Kit”
- Now go to “/ece/Keysight/ADS2023/oalibs/componentLib” and select RF_Transistors_vendor_kit.7z.
- **If you can't find it in your PC I have also added .7z file in gauchospace.**
- Unzip the library to a location in your personal ads directory

- After unzipping it should look like this



Adding component

In your schematic Window go to Insert>Component>Component Library



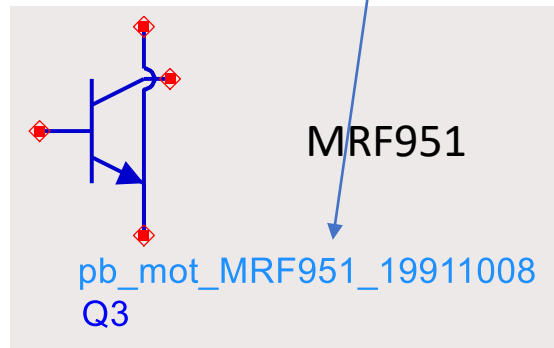
- ▼ All Libraries
 - > Workspace Libraries
 - > ADS Analog/RF Libraries
 - > ADS DSP Libraries
 - ▼ Read-Only Libraries
 - > Infineon_RF
 - > Infineon_RF_tech
 - > RF_Transistors

Here you can search in the RF_Transistors library

Component
mf_mot_MRF134_19930106
mf_mot_MRF136_19930106
mf_mot_MRF136V_19930106
mf_mot_MRF161_19930106
mf_phi_DU2805S_19930106
mf_phi_DU2810S_19930106
mf_phi_LF2802A_19930106
mf_phi_LF2805A_19930106
mf_phi_LF2810A_19930106
mf_phi_UF2805B_19930106
mf_phi_UF2810P_19930106
mf_phi_UF2815B_19930106
mf_phi_UF2820P_19930106
mf_ply_F2001_19930106
mf_ply_F2002_19930106
mf_ply_F2003_19930106
mf_ply_F2004_19930106
pb_bit_B12V105d02_19921215
pb_bit_B12V105d05_19921215
pb_bit_B12V114d02_19931202
pb_bit_B12V114d05_19921215
pb_bit_B15V140d09_19931202
pb_bit_B15V140d10_19921215
pb_bit_BT114d05_19911003
pb_bit_BT114d10_19911001
pb_bit_BT114d12_19911001
pb_hit_2SC2712_19921217
pb_hit_2SC2734_19921213
pb_hit_2SC3793_19921215
pb_hp_AT00510_19921101
pb_hp_AT00511_19931202
pb_hp_AT00535_19921101
pb_hp_AT00570_19921101
pb_hp_AT01610_19921101
pb_hp_AT01635_19921101
pb_hp_AT01670_19921101
pb_hp_AT30511_19940623
pb_hp_AT30533_19940623
pb_hp_AT31011_19940623
pb_hp_AT31033_19940623
pb_hp_AT32011_19950105
pb_hp_AT32032_19980529
pb_hp_AT32033_19950105

- Search for MRF951 or MRF901 based on what you want to use

The name for MRF 951 is



The name for MRF 901 is

